

EXECUTIVE SERIES RAILWAY STATION GARAGE



DRUMMOND
DESIGNS.COM
© COPYRIGHTS

Plan #TBM07-3935

Total living area: (1096 sq.ft / 98.64 sq.m)

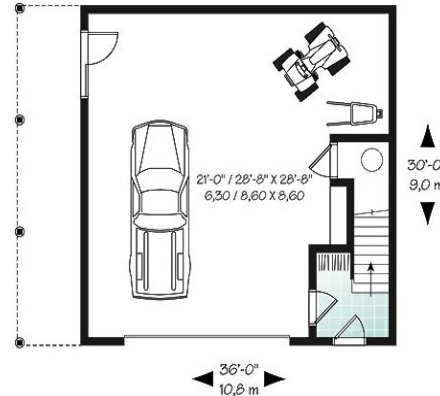
2 Bedroom with 2 Baths

Three-car Garage (773 sq.ft. / 69.57 sq. m.)

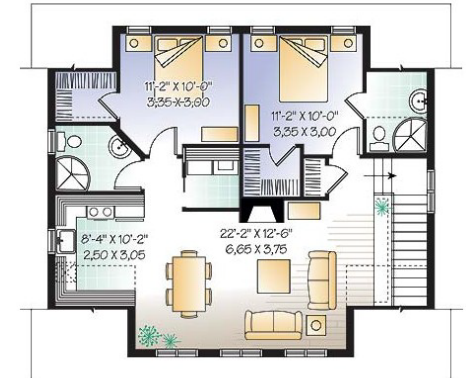
Foundation Option: Floating Slab

Contact
**LUMBER
MART**
for details
and pricing!

Special Features: Ample storage in the bedrooms. Well situated fireplace on second level. Other built-in storage also serves as a railing at the top of the stairs.



1st level



2nd level

**LUMBER
MART**

**HOME IMPROVEMENT
LIQUIDATION
WAREHOUSE**

• 751 Herring Cove Road,
Halifax, N.S.,
Tel. 477-6500

• 15 Wright Ave., Burnside,
Dartmouth, N.S.,
Tel. 468-7772

NEED HELP PLANNING YOUR NEW GARAGE?

Visit us online... lumbermart.ca/garages.aspx