

# EXECUTIVE SERIES EXECUTIVE WITH LOFT



## Plan #TBM07-2986

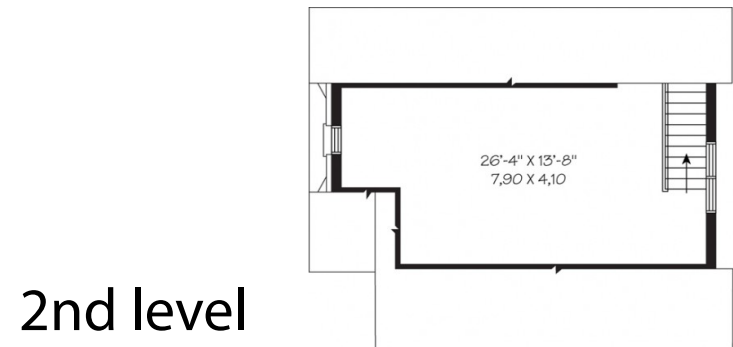
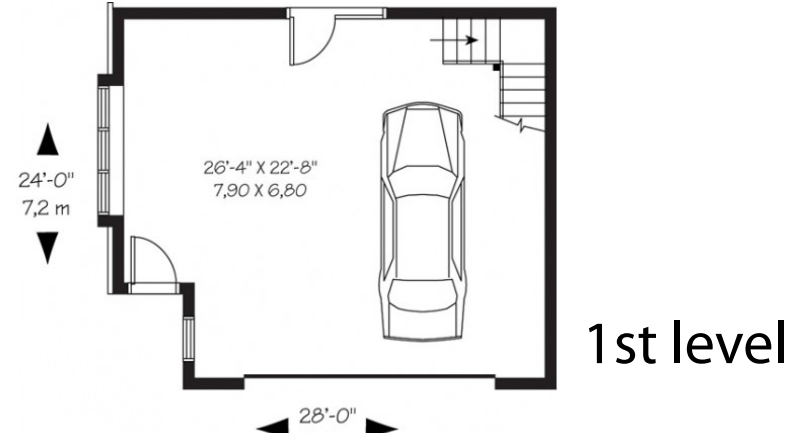
Total living area: (1048 sq.ft / 94.32 sq.m)

Two-car Garage 645 sq.ft. / 58.05 sq.m.

Foundation Option: Floating Slab

Contact  
**LUMBER  
MART**  
for details  
and pricing!

Special Features: Second level bonus storage (403 sq.ft. / 36.27 sq.m.)



## HOME IMPROVEMENT LIQUIDATION WAREHOUSE

- 751 Herring Cove Road, Halifax, N.S., Tel. 477-6500
- 15 Wright Ave., Burnside, Dartmouth, N.S., Tel. 468-7772

**NEED HELP PLANNING YOUR NEW GARAGE?**

Visit us online... [lumbermart.ca/garages.aspx](http://lumbermart.ca/garages.aspx)