

# EXECUTIVE SERIES COTTAGE GARAGE



## Plan #TBM07-2933

Total living area: (1080 sq.ft / 97.20 sq.m)

2 Bedrooms with 1-1/2 Baths

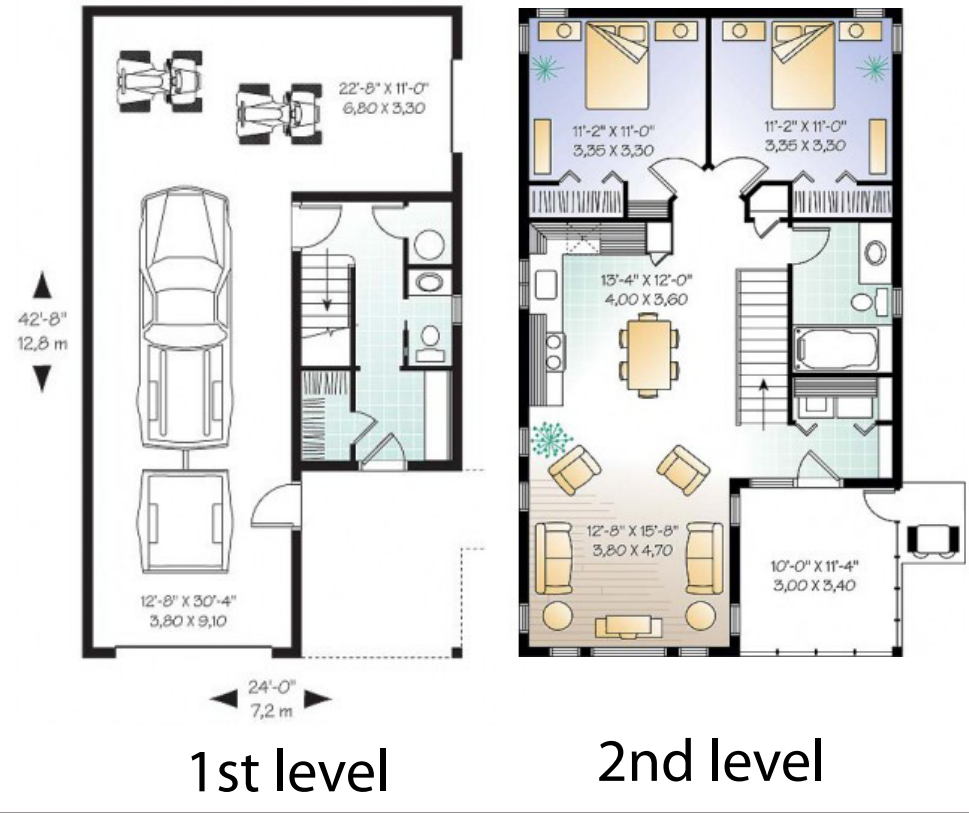
Two-car Garage (696 sq. ft. / 62.64 sq. m.)

Foundation Option: Floating Slab

Contact  
**LUMBER  
MART**

for details  
and pricing!

Special Features: Screened in balcony with 2 separate garage doors



**HOME IMPROVEMENT  
LIQUIDATION  
WAREHOUSE**

• 751 Herring Cove Road,  
Halifax, N.S.,  
Tel. 477-6500

• 15 Wright Ave., Burnside,  
Dartmouth, N.S.,  
Tel. 468-7772

**NEED HELP PLANNING YOUR NEW GARAGE?**

**Visit us online... [lumbermart.ca/garages.aspx](http://lumbermart.ca/garages.aspx)**